

D.A.A.F. - SPECIFIED USAGE

This smoke detector has been especially designed for private dwellings (houses, flats, caravans, mobile-homes, etc). Smoke is immediately detected: a loud (93dB) sound signal is triggered and a red signal light (Led flash) is turned on.

There is no need for an electric plugging (9 V battery cell). Goods and people are 24/7 protected when the detector is mounted in strategic places: corridor ceiling, bedroom, stairwell, and on each floor.

CERTIFIED PRODUCT



DETECTOR CHARACTERISTICS

Weight : 115 g
 Height : 60 mm
 Diameter : 118 mm
 Voltage supply : 15 to 30 Vac
 Consumption under standby status : 0,6 mA
 Consumption under alarm status : 26 mA
 Internal voltage regulation
 Protection against electromagnetic interferences
 Relative humidity : 93% at 40°C
 Service temperature : from -10°C to + 60°C
 Material : ivory colour ABS

BASE CHARACTERISTICS

Weight : 45 g
 Height : 23 mm
 Diameter : 103 mm

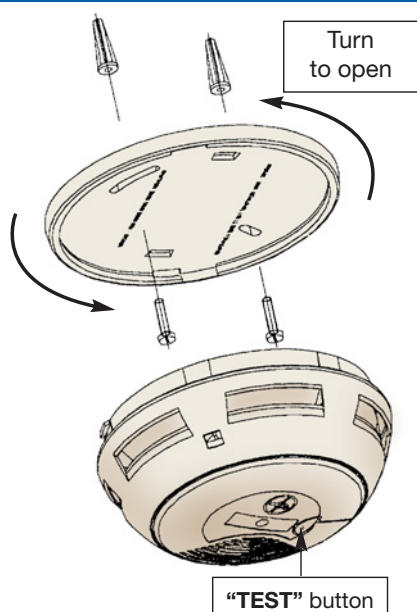
REFERENCES

Provided in cardboard box : Ref. **6939-10**

D.A.A.F.

Self-contained smoke alarm detector especially designed for dwellings (houses, flats, caravans, mobile-homes etc)

EASY SET UP WITHOUT ELECTRIC BRANCHING

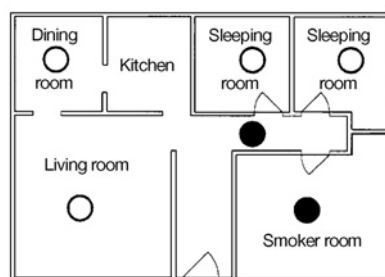


- 2 screws and 2 plugs
- 1 alkaline 9V battery cell (1 year autonomy) are supplied to assemble the **D.A.A.F.** on ceiling (or on wall when ceiling assembly is not possible).

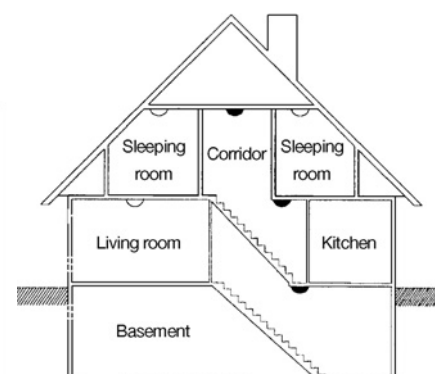
WHERE TO POSITION THE SELF-CONTAINED SMOKE ALARM DETECTOR D.A.A.F.

With the **D.A.A.F.**, you are sure that goods and people are 24/24 protected when the detector is mounted in strategic places: corridor ceiling, bedroom, stairwell, and on each floor.


- Basic protection
- Enhanced protection



FLAT



HOUSE

- The **D.A.A.F.** Self-contained smoke alarm detector is NF certified  insuring an optimum reliability and state-of-the-art technology.
- Seen as an additional protection, its presence increases the feeling of safety at home.

● **The D.A.A.F. is not a gas detector**